

StarLine

Designed by BÖWE



PX16

PX19

KX16

KX19

THE NEW STANDARD

StarLine

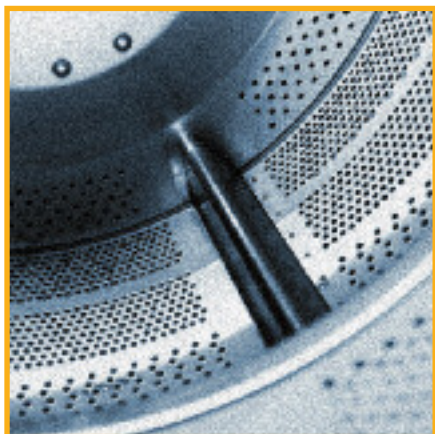
Designed by BÖWE

BÖWE
Textile Cleaning

RELIABLE DRYCLEANING MACHINES THROUGH PROVEN BÖWE QUALITY

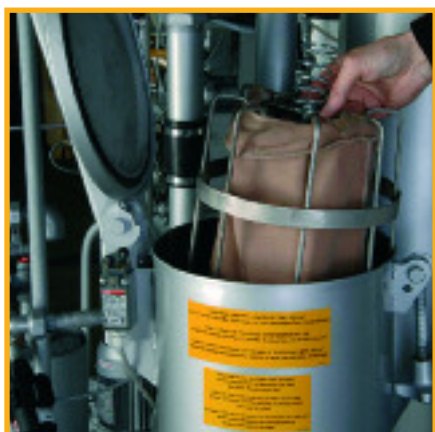
PATENTED – DYNAMIC CAGE PERFORATION

Optimum cleaning results can only be achieved through a high-performance drying system in your drycleaning machine. BÖWE utilize a patented dynamic cage perforation, which allows for a considerably better penetration of the



Best possible drying by optimized cage airflow

garments with drying air and results in an effective, fast drying even with delicate garments; this BÖWE developed cage perforation has been used in the PremiumLine series for years. Together with the optimized program sequences, with considerably reduced cycle times, BÖWE StarLine machines offer strong capacity at an economically advantageous price.



Proven principle: Only one opening for button trap and lint filter on PX models



AN IMPORTANT POINT - MAINTENANCE

Thanks to the ideal combination of button trap and lint filter in one place maintenance of this machine is reduced to a minimum. Because of the large filter surface and button trap basket, cleaning is sufficient only once a day in standard operation.

Another environmentally friendly feature of the StarLine is the emission free still rake out system. Using an azeotropic compound of water and perc from a reduction of the boiling point, means this is a minimal maintenance constructed unit.



The automatic emission free still rake out system requires no manual intervention in normal operation

YOUR ADVANTAGE – BÖWE'S STRENGTH IN TECHNOLOGY, KNOW-HOW AND PRODUCTION

YOUR ADDED VALUE AT A GLANCE

- Satisfied customers by optimum standard cleaning programs geared to any kind of garments
- Greatest flexibility for the drycleaner by freely programmable cleaning programs
- Greatest possible safety by a well-engineered diagnostic system and operator guidance
- Optimum drying and shorter cycle times by patented dynamic cage perforation
- Optimum solvent quality by modern distillation management
- Great energy efficiency and thermo-mechanical stability through a round still
- Less loss of solvent because of the secondary water separator and a unique emission free still rake out system
- Consistently high cleaning quality, because of the standard-fit dosing unit and solvent cooling (cooling water)
- Easy, time saving maintenance, especially because of the maintenance opening on the cage back plate
- More space for your shop because of the space saving design

		PX16	PX19
Solvent		perchloroethylene	perchloroethylene
Cage			
Loading capacity	kg (1:20)	15	18
	kg (1:19)	16	19
Cage volume	l	300	360
Cage diameter	mm	820	820
Cage depth	mm	570	680
Cleaning speed	rpm	40	40
Maximum extraction speed	rpm	400	400
Tanks (filling quantities)			
Tank I	l	145	170
Tank II	l	95	110
Still			
Filling volume	l	120	120
Extraction filter			
Filter surface	sqm	2.4	2.4
Filter contents	l	40	40
Machine dimensions			
Width	mm	1,840	1,840
Depth	mm	1,390	1,500
Height (entry measurement)	mm	1,995	1,995
Height (installed)	mm	2,260	2,260
Weight			
Without solvent	kg	1,180	1,280
Floor surface	sqm	2.5	2.6

Subject to technical changes and error.



MAXIMUM DEMANDS ON QUALITY AND SAFETY

In the drycleaning business protection of both man and environment is of great importance to us. By use of the SLIMSORBA integrated adsorption unit (if desired) especially low residual solvent concentrations in the garments are reached - an advantage as regards freshness and well-being for your customers and employees.

For highest quality demands BÖWE offers a dosing unit as standard on the StarLine machines. Optionally, you can add another dosing unit or a spraying unit for finishing of high-quality garments.



SLIMSORBA to meet strictest environmental regulations and for best working conditions



The spraying unit (optional) with rinsing pipe for finishing directly off the drum

MACHINES WITH TANGIBLE ADVANTAGES AND ADDED VALUE FOR YOU

KX16 KX19

Hydrocarbon solvents, cyclosiloxanes

15	18
16	19
300	360
820	820
570	680
40	40
500	500
145	170
95	110
only with combined filter system	
5.0	5.0
75	75
1,840	1,840
1,390	1,500
1,995	1,995
2,260	2,260
1,180	1,280
2.5	2.6

Subject to technical modifications and error.



THIS IS WHAT THE STARLINE KX OFFERS

- Standard cleaning programs, specific to all kinds of garments
- Patented dynamic cage perforation
- Button trap and lint filter at one central point
- Well-engineered diagnosis system, plain text display
- Cage back plate maintenance opening
- Frequency controlled variable speed drive
- Solvent cooling by refrigeration technology
- Solvent tanks with sloped bottom
- Space saving design
- Optionally 2nd dosing or spraying unit



YOUR ADDED VALUE AT A GLANCE

- Free choice of your cleaning concept by various filter systems
- Flexibility with selection of the solvent: Designed for use of HC and cyclosiloxanes
- Guaranteed compliance with the requirements of the 31st BImSchV via an excellent system to monitor solvent concentration
- Fast exchange of liquor by increased pump pressure

PROVEN HC SAFETY TECHNOLOGY BY BÖWE

The temperature control in the machine has been tried and tested for many years. Double action sensors and temperature limiters provide multiple protection for the system. The fan is explosion-proof (zone 2).



The large sedimentation tank allows for a convenient operation of the machine in accordance with concept C.



Reliable cooling by the refrigeration unit guarantees the right solvent temperature.

YOUR VISION, YOUR DECISION – THE ABC-CONCEPT

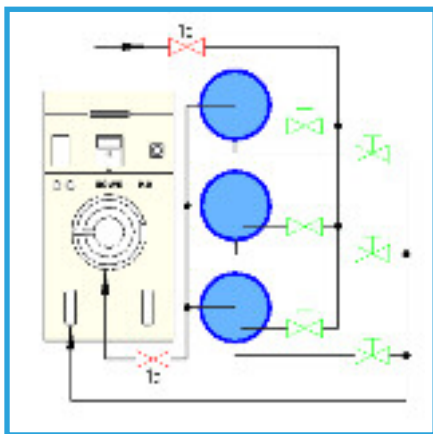
You have decided to use hydrocarbon or cyclo-siloxane solvent in conjunction with filter technology and intentionally to work without a still. StarLine KX machines offer this proven process engineering solution at a favorable price.

EASY TO MAINTAIN CARTRIDGE FILTER TECHNOLOGY

With these machine versions you work with conventional filter technology, without filter powder.

Concept A

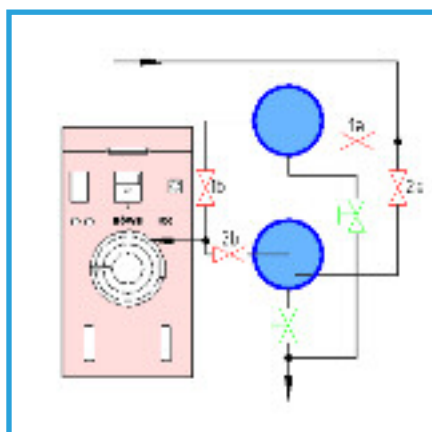
Out of three available large easy-to-exchange cartridge filters, two each are used in the active cleaning process, while the third filter is being maintained.



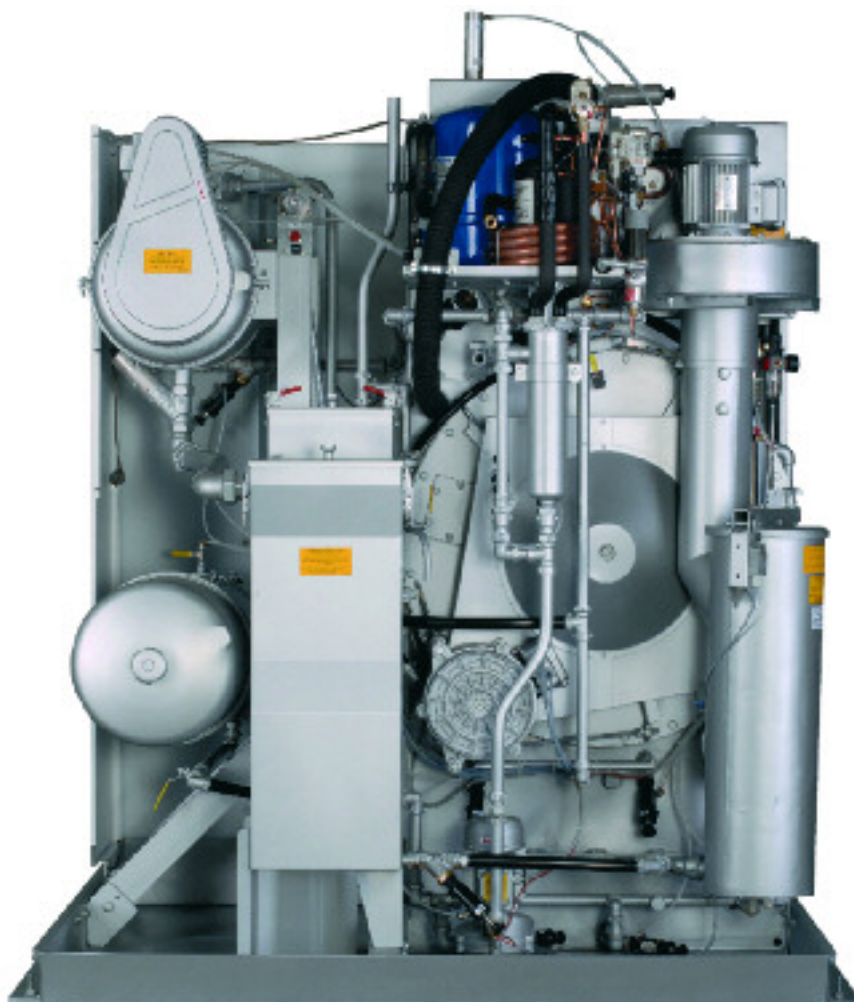
Concept A - the 3 cartridge concept

Concept B

Two cartridge filters each are allocated to one tank. Thus, you can clean dark and light garments one after the other anytime.



Concept B - with one cartridge filter per tank




Rear view of the machine version as per concept C

COMBINED FILTER SYSTEM

Concept C

The extraction filter is used with filter powder and can be recycled by centrifuging. In combination with a filter cartridge reliable cleaning of the liquor is guaranteed. You can clean dark and light garments one after the other anytime.



CREATIVE THINKING, QUALITY AND CUSTOMER SATISFACTION GOVERN BÖWE'S BUSINESS PHILOSOPHY. INNOVATION – THE KEY TO SUCCESS.

Tradition meets innovation – for more than 60 years BÖWE has been one of the leading companies in the field of drycleaning machinery.

As a pioneer of cleaning technology we major on this tradition, on responsibility and comprehensive know-how. We offer modern and innovative drycleaning machinery for perc and HC, and also for the new silicone-based alternatives. No matter what solvent – our machines support your success through cost effectiveness and best cleaning results. Our quality standards work from the

inside out, i.e. from development through to after sales support and service.

We at BÖWE think of proximity to customers in two ways. On the one hand, from a geographical perspective: besides our company factory base in Augsburg, Germany, sales and service partners in more than 50 countries guarantee BÖWE's presence in all important markets on all continents.

On the other hand, proximity to customers means fast delivery and perfect after sales support. This alone, however, is not sufficient to us. Since we can only fulfill international demands and act totally customer-effectively through consultation even in the development phase we discuss, design and modify together with our international partners in order to consider the local requirements of all markets.

PX16 PX19 KX16 KX19



BÖWE Textile Cleaning GmbH
Dr.-Georg-Schaeffler-Str. 22
77815 Bühl
Germany
Tel. +49 (0) 7223 80103-0
Fax +49 (0) 7223 80103-29
info@boewe-tc.de
www.boewe-tc.de

Your BÖWE Partner

BÖWE
Textile Cleaning